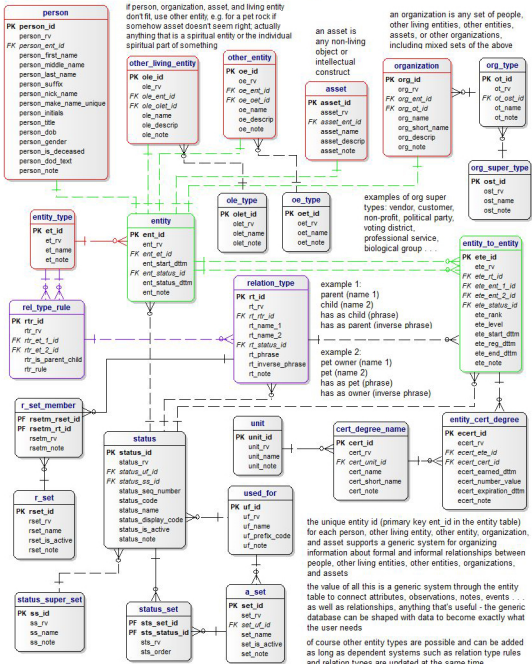


# 1. Gen Pro Entity Relationship Information Management

24 Tables

6-18-2023 © 2015, 2023 wceDesign llc



relation type rules map entity types to defined rules/forms for unique entity relationships, e.g. person to person, organization to organization, organization to person, person to asset, asset to asset, person to other living entity, etc. and defines whether the relationship is hierarchical

relation types are specific types for a given rule/form, e.g. parent company and subsidiary for the hierarchical organization to organization relation type rule, vendor and customer for the equal organization to organization rule, employer and employee for the hierarchical organization to person rule, spouse and spouse, friend and friend for the equal person to person rule, person and pet or person and a plant for a person to other living creature rule, book and chapter for a hierarchical asset to asset rule, etc.

r\_set supports managing sub sets of relation\_type records with the same rule/form, e.g. r\_set family could be the set of all family relationships